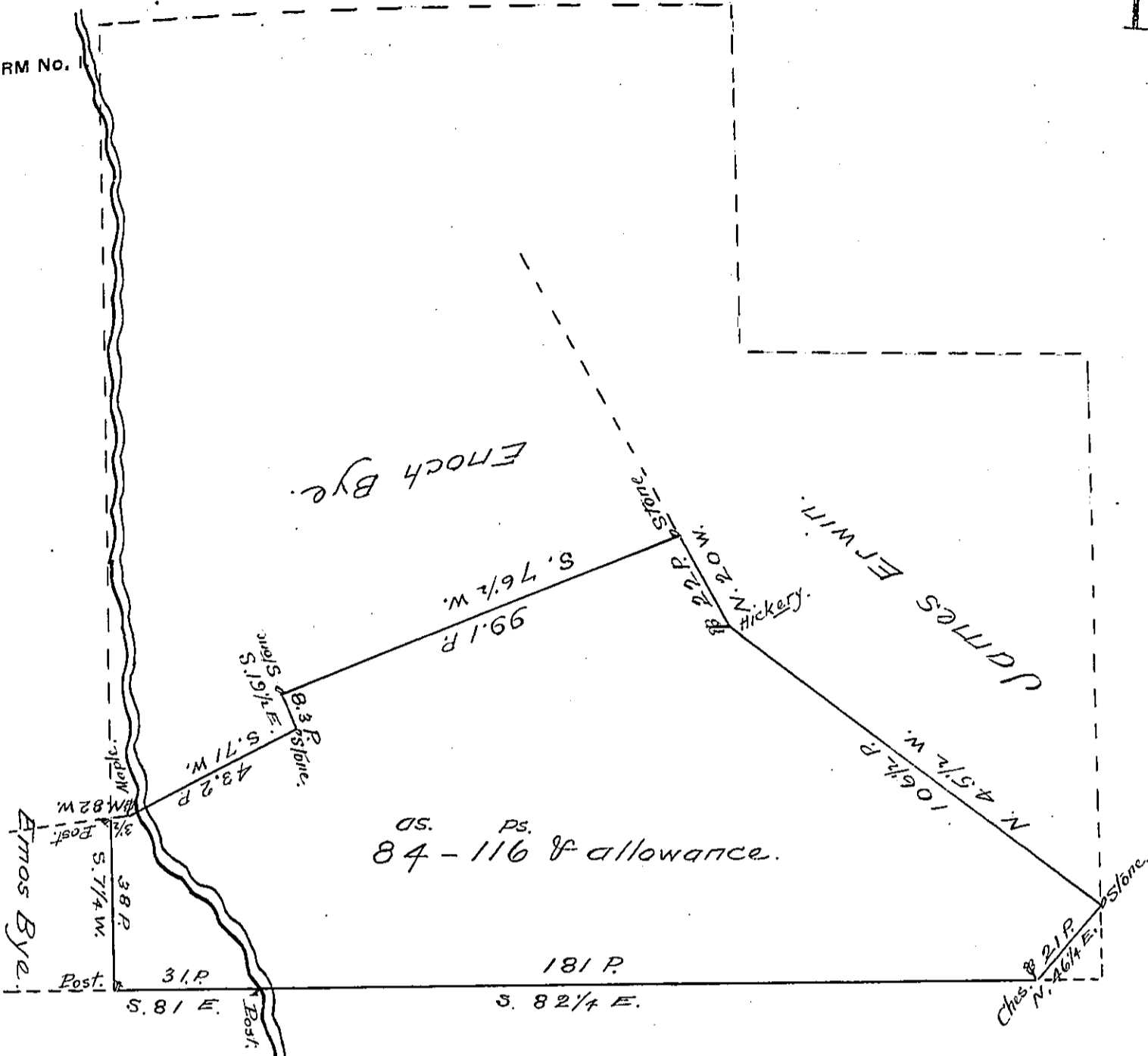


FORM NO. 1



Abraham Sidwell

William Wherry

The above Draught represents a Tract of Land situate in East Nottingham Township Chester County between great & little Elk Rivers Being part Contain- ing 84 acres & 116 perches and allowance of six per cent &c. Being part of 216 acres & allowance which by virtue of a warrant from the Proprietaries bearing date 9^{br} 15th 1735 Surveyed unto William Morrison on ye 25th of the same

Surveyed January 7th 1818

Jacob Spangler Esq^r
 Surveyor General

P. Arthur Andrews U.S. D.S.

Note - Amos Bye - The present owner and occupier of the above Tract.

IN TESTIMONY that the above is a copy of the original remaining on file in the Department of Internal Affairs of Pennsylvania, made conformably to an Act of Assembly approved the 16th day of February, 1833, I have hereunto set my Hand and caused the Seal of said Department to be affixed at Harrisburg, this seventh day of March 1906.

Samuel D. Brown
 Secretary of Internal Affairs.